



# BPW-8210

80W 24V DC-DC Open Frame Power Supply  
Input Range: 18~36VDC

Industrial Power Supply



| PIN | Output |
|-----|--------|
| 1~3 | +5V    |
| 4~7 | GND    |
| 8~9 | +12V   |
| 10  | -12V   |
| 11  | -5V    |
| 12  | N/C    |

| Output Voltage | Min. Load | Rated Load | Max. Load | Voltage Accuracy |
|----------------|-----------|------------|-----------|------------------|
| +5V            | 0A        | 10A        | 12A       | 5~5.2V           |
| +12V           | 0A        | 2A         | 3A        | 11.4~12.6V       |
| -12V           | 0A        | 0.5A       | ----      | -11.4~-12.6V     |
| -5V            | 0A        | 0.5A       | ----      | -5.25~-4.75V     |

## Specifications

### Input Voltage

18~36VDC

### Input Current

7A at 24VDC max.

### Inrush Current

< 10A at 24VDC input from a cold start 25°C excluding EMI suppression capacitors

### Load Range

With all other outputs within their accuracy ranges and all output at 60% rated load, the +5V output is between 4.95~5.05V. Max. load can not exceed 80W convection cooling and 100W forced air cooling

### Ripple And Noise

Peak to peak ripple and noise for +5V is < 50mV, and < 100mV for the other outputs at rated load, nominal line

### Line Regulation

< +/-1% for each output at rated load and +/-10% of input voltage variables

### Load Regulation

< +/-1% for +5V, and < +/-5% for -12V, +12V, -5V while changing measured output load from +/-40% to 60% rated load and keeping other outputs at 60% rated load

### Efficiency

> 70% at DC24V and rated load

### Altitude

> 10,000 feet

### Protection

Built-in over voltage protection circuit. Trip point of crowbar circuit is between 5.7~7V. Hiccup mode against short circuit or over load conditions auto recovery when fault conditions are removed

### Temperature

0~+50°C, can start up -20°C (operating); -40~+85°C (storage)

### Connectors

DC Input: Terminal blocks

DC Output: Molex 5273-12A

### Safety

UL 1950 / CSA 22.2 No.234 / VDE EN60950

### EMI

FCC class B / EN55022 B

### EMS

Level 3 of IEC-802, 803, 804

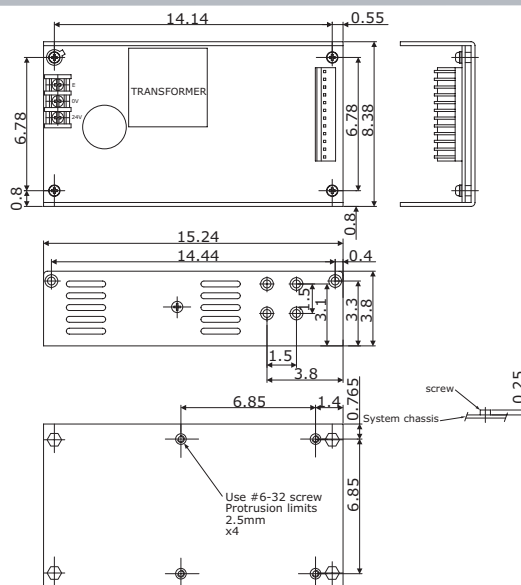
### Dimensions

15.24 x 8.38 x 3.8 cm with +/-0.8mm and +/-0.4mm tolerance between mounting holes

# BPW-8410

80W 48V DC-DC Open Frame Power Supply  
Input Range: 36~72VDC

DC-DC



| PIN | Output |
|-----|--------|
| 1~3 | +5V    |
| 4~7 | GND    |
| 8~9 | +12V   |
| 10  | -12V   |
| 11  | -5V    |
| 12  | N/C    |

| Output Voltage | Min. Load | Rated Load | Max. Load | Tolerance |
|----------------|-----------|------------|-----------|-----------|
| +5V            | 0A        | 10A        | 12A       | +/-0.05V  |
| +12V           | 0A        | 2A         | 3A        | +/-0.6V   |
| -12V           | 0A        | 0.5A       | ----      | +/-0.6V   |
| -5V            | 0A        | 0.5A       | ----      | +/-0.75V  |

## Specifications

### Input Voltage

36~72VDC

### Input Current

5A at 48VDC max.

### Inrush Current

< 10A at 48VDC input from a cold start 25°C excluding EMI suppression capacitors

### Load Range

With all other outputs within their accuracy ranges and all output at 60% rated load, the +5V output is between 4.95~5.05V. Max. load can not exceed 80W convection cooling and 100W forced air cooling

### Ripple And Noise

Peak to peak ripple and noise for +5V is < 50mV, and < 100mV for the other outputs at rated load, nominal line

### Line Regulation

< +/-1% for each output at rated load and +/-10% of input voltage variables

### Load Regulation

< +/-1% for +5V, and < +/-5% for -12V, +12V, -5V while changing measured output load from +/-40% to 60% rated load and keeping other outputs at 60% rated load

### Efficiency

> 70% at DC24V and rated load

### Altitude

> 10,000 feet

### Protection

Built-in over voltage protection circuit. Trip point of crowbar circuit is between 5.7~7V. Hiccup mode against short circuit or over load conditions auto recovery when fault conditions are removed

### Temperature

0~+50°C (operating); -40~+85°C (storage)

### Connectors

DC Input: Terminal blocks

DC Output: Molex 5273-12A

### Safety

UL 1950

### EMI

FCC class B / EN55022 B

### Dimensions

15.24 x 8.38 x 3.8 cm with +/-0.8mm and +/-0.4mm tolerance between mounting holes